






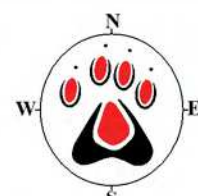

TSLEIL-WAUTUTH NATION
WESTRIDGE MARINE TERMINAL
2005 SPILL ENSEMBLE

OIL LOCATED IN
SENSITIVE MARINE
AND CULTURAL SITES:
24 HOURS AFTER SPILL

Legend

-  Tsileil-Waututh Nation Reserve
-  Other Indian Reserve
-  Greenspace
-  Sensitive Habitat and Cultural Sites: 89% of oil located within area
-  Oil

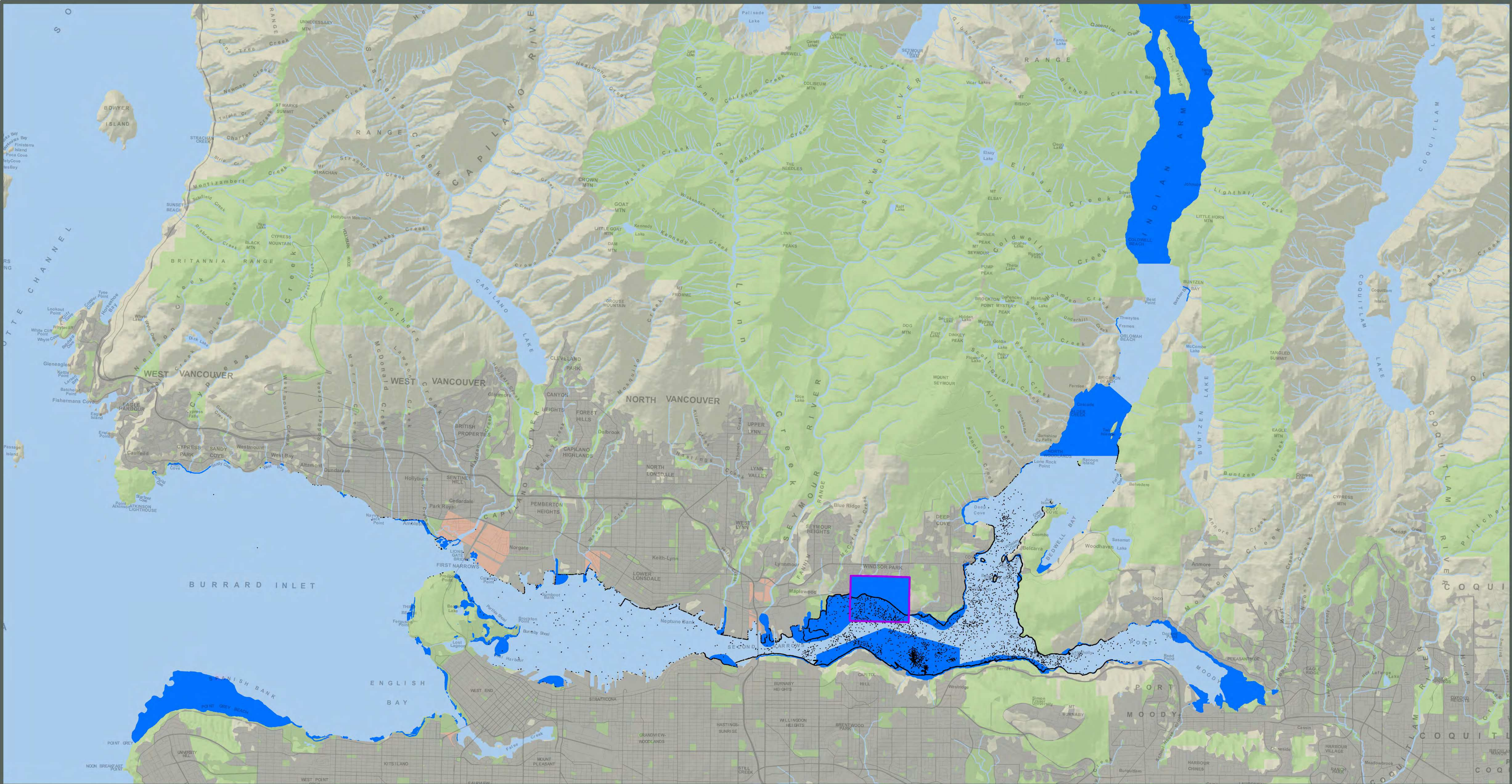
Map Scale: 1:50,000 Inset Map Scale: 1:15,000
Projection: UTM, NAD 83, Zone 10



This map is a living document and is intended to be amended and refined over time. It is not an expression of the location of Tsileil-Waututh aboriginal title. The data used to produce this map originate from many sources and are presented without prejudice. This map is the property of the Tsileil-Waututh Nation and may not be reproduced without written permission.

Sources of spatial data for this map include Tsileil-Waututh Nation, BC Government, Government of Canada, BIEAP, and GeoBase.

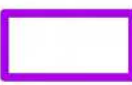




Map produced January 2015 by the Tsileil-Waututh Nation.



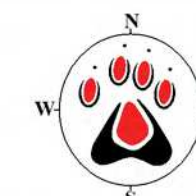
TSLEIL-WAUTUTH NATION
WESTRIDGE MARINE TERMINAL
2005 SPILL ENSEMBLE

OIL LOCATED IN
SENSITIVE MARINE
AND CULTURAL SITES:
48 HOURS AFTER SPILL

Legend

-  Tsileil-Waututh Nation Reserve
-  Other Indian Reserve
-  Greenspace
-  Sensitive Habitat and Cultural Sites: 79% of oil located within area
-  Oil

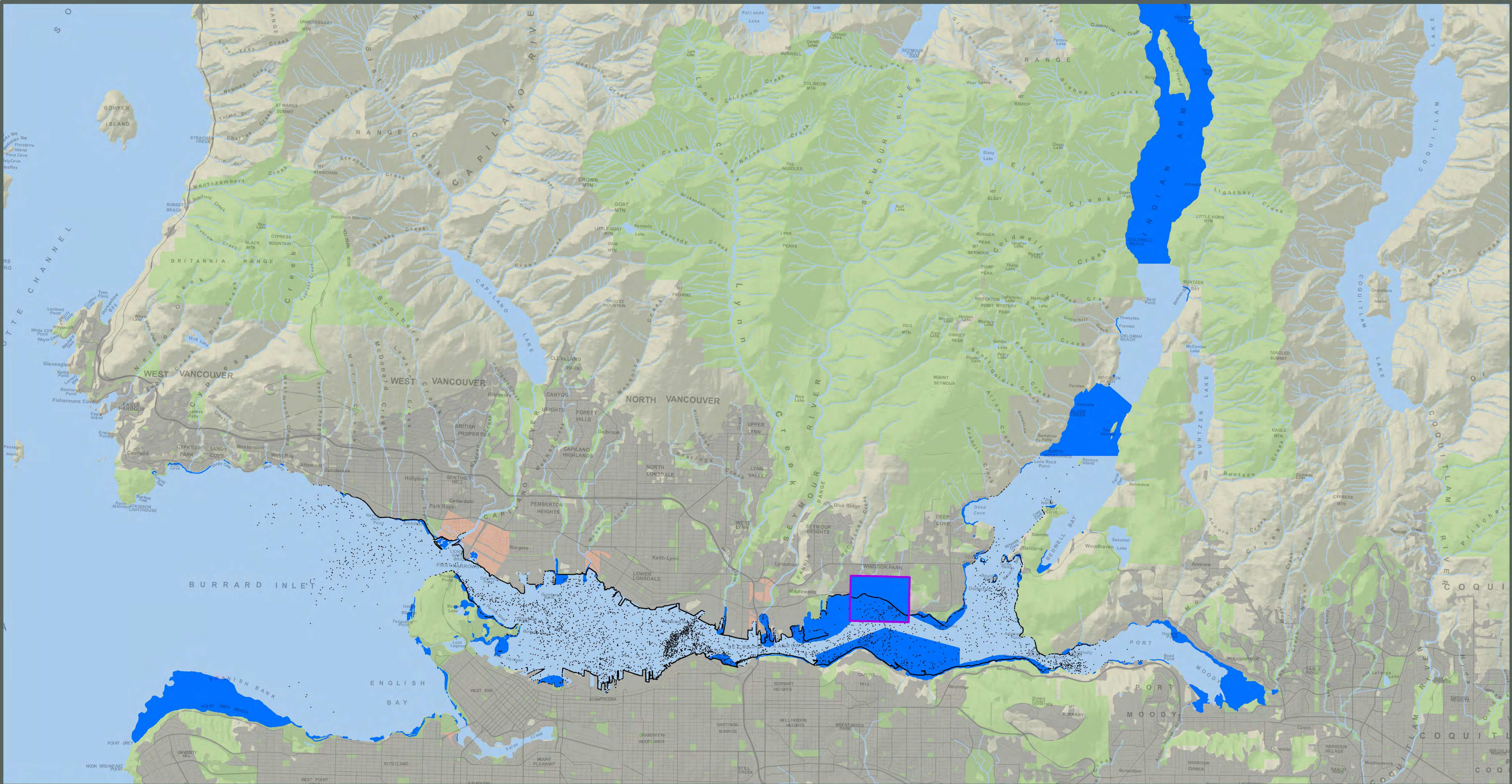
Map Scale: 1:50,000 Inset Map Scale: 1:15,000
Projection: UTM, NAD 83, Zone 10
0 1 2 4 Kilometers



This map is a living document and is intended to be amended and refined over time. It is not an expression of the location of Tsileil-Waututh aboriginal title. The data used to produce this map originate from many sources and are presented without prejudice. This map is the property of the Tsileil-Waututh Nation and may not be reproduced without written permission.

Sources of spatial data for this map include Tsileil-Waututh Nation, BC Government, Government of Canada, BIEAP, and GeoBase.

Map produced January 2015 by the Tsileil-Waututh Nation.



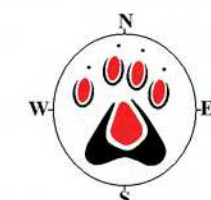
**TSLEIL-WAUTUTH NATION
SECOND NARROWS 2005
SPILL ENSEMBLE**

**OIL LOCATED IN
SENSITIVE MARINE
AND CULTURAL SITES:
24 HOURS AFTER SPILL**

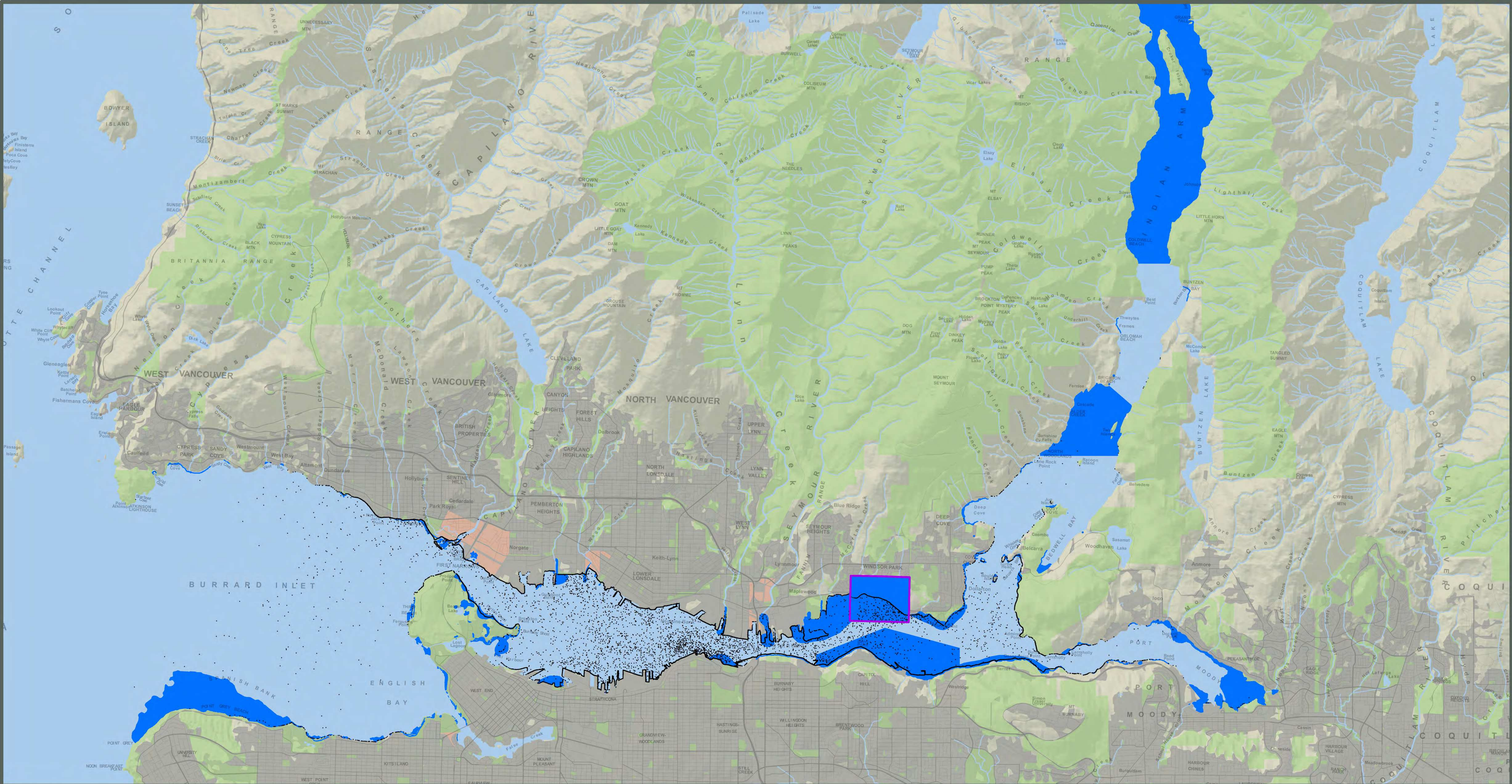
Legend

- Tsleil-Waututh Nation Reserve
- Other Indian Reserve
- Greenspace
- Sensitive Habitat and Cultural Sites: 28% of oil located within area
- Oil

Map Scale: 1:50,000 Inset Map Scale: 1:15,000
Projection: UTM, NAD 83, Zone 10
0 1 2 4 Kilometers








This map is a living document and is intended to be amended and refined over time. It is not an expression of the location of Tsleil-Waututh aboriginal title. The data used to produce this map originate from many sources and are presented without prejudice. This map is the property of the Tsleil-Waututh Nation and may not be reproduced without written permission.
Sources of spatial data for this map include Tsleil-Waututh Nation, BC Government, Government of Canada, BIEAP, and GeoBase.
Map produced January 2015 by the Tsleil-Waututh Nation.



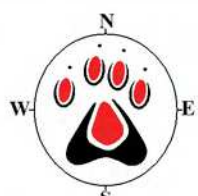
**TSLEIL-WAUTUTH NATION
SECOND NARROWS 2005
SPILL ENSEMBLE**

**OIL LOCATED IN
SENSITIVE MARINE
AND CULTURAL SITES:
48 HOURS AFTER SPILL**

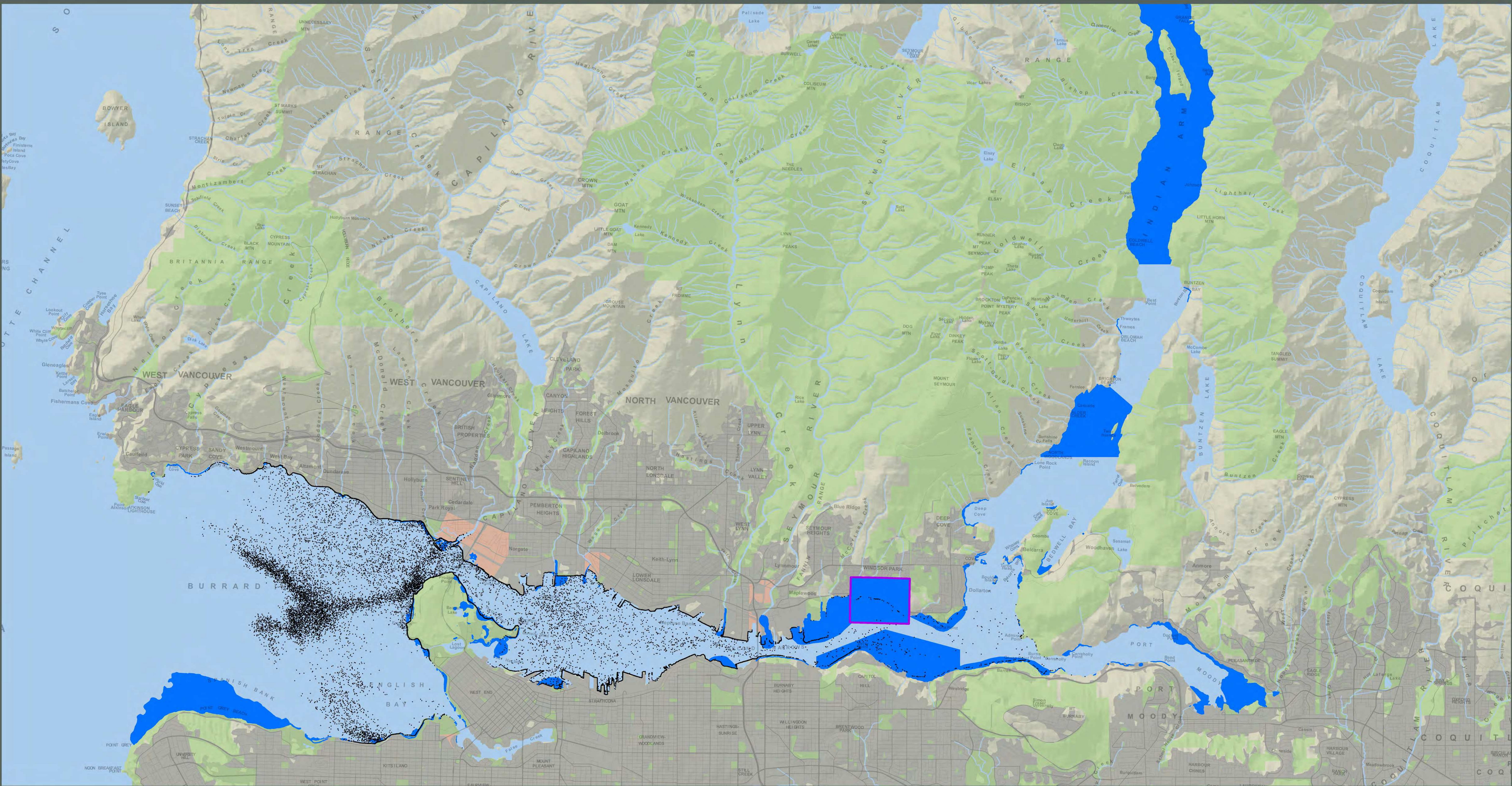
Legend

-  Tsleil-Waututh Nation Reserve
-  Other Indian Reserve
-  Greenspace
-  Sensitive Habitat and Cultural Sites: 30% of oil located within area
-  Oil

Map Scale: 1:50,000 Inset Map Scale: 1:15,000
Projection: UTM, NAD 83, Zone 10
0 1 2 4 Kilometers








This map is a living document and is intended to be amended and refined over time. It is not an expression of the location of Tsleil-Waututh aboriginal title. The data used to produce this map originate from many sources and are presented without prejudice. This map is the property of the Tsleil-Waututh Nation and may not be reproduced without written permission.
Sources of spatial data for this map include Tsleil-Waututh Nation, BC Government, Government of Canada, BIEAP, and GeoBase.
Map produced January 2015 by the Tsleil-Waututh Nation.



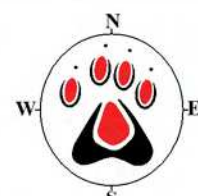
TSLEIL-WAUTUTH NATION
FIRST NARROWS 2005
SPILL ENSEMBLE

OIL LOCATED IN
SENSITIVE MARINE
AND CULTURAL SITES:
24 HOURS AFTER SPILL

Legend

-  Tsleil-Waututh Nation Reserve
-  Other Indian Reserve
-  Greenspace
-  Sensitive Habitat and Cultural Sites: 14% of oil located within area
-  Oil

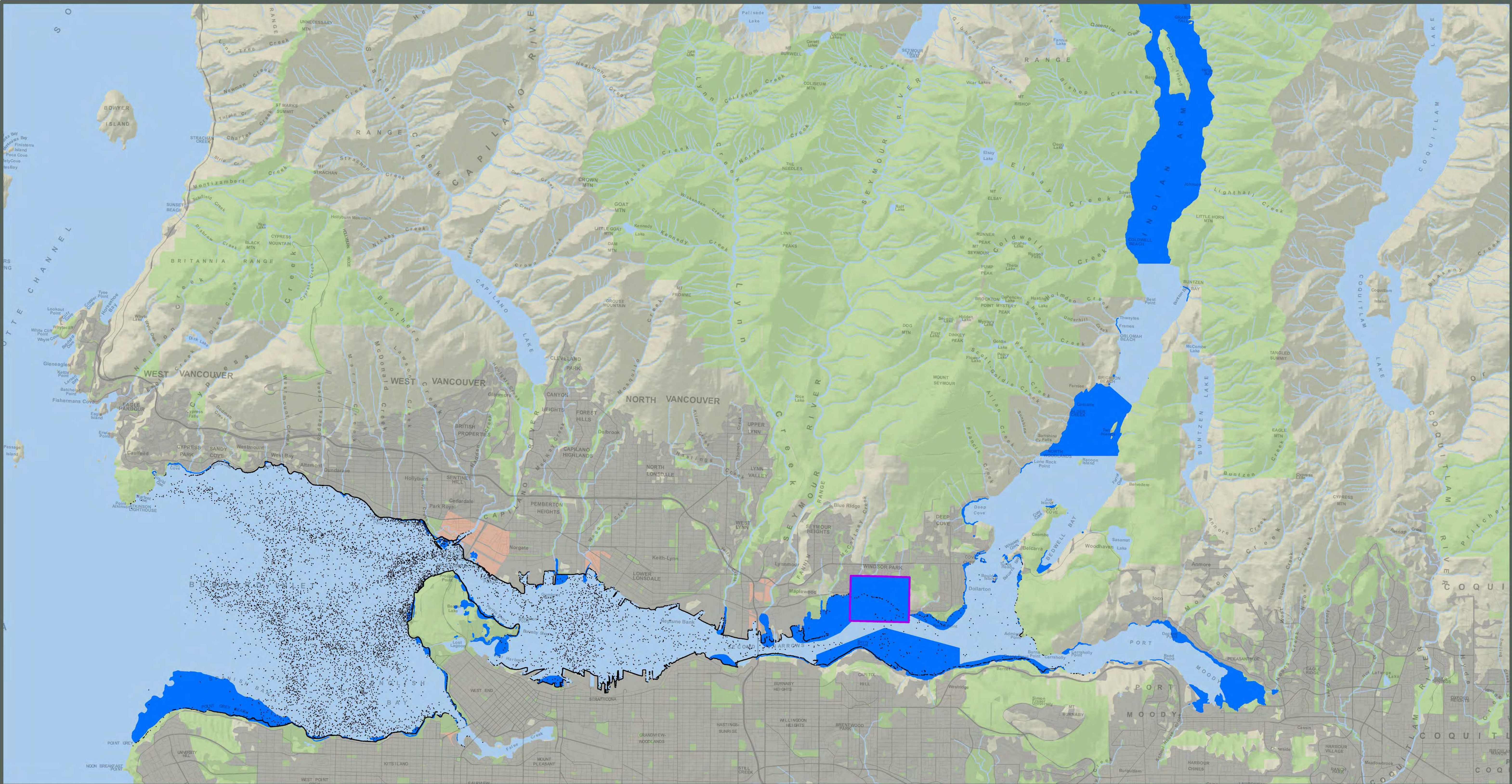
Map Scale: 1:50,000 Inset Map Scale: 1:15,000
Projection: UTM, NAD 83, Zone 10
0 1 2 4 Kilometers



This map is a living document and is intended to be amended and refined over time. It is not an expression of the location of Tsleil-Waututh aboriginal title. The data used to produce this map originate from many sources and are presented without prejudice. This map is the property of the Tsleil-Waututh Nation and may not be reproduced without written permission.






Sources of spatial data for this map include Tsleil-Waututh Nation, BC Government, Government of Canada, BIEAP, and GeoBase.

Map produced January 2015 by the Tsleil-Waututh Nation.

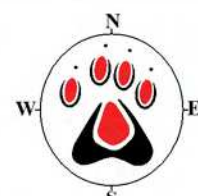


TSLEIL-WAUTUTH NATION
FIRST NARROWS 2005
SPILL ENSEMBLE
OIL LOCATED IN
SENSITIVE MARINE
AND CULTURAL SITES:
48 HOURS AFTER SPILL

Legend

-  Tsleil-Waututh Nation Reserve
-  Other Indian Reserve
-  Greenspace
-  Sensitive Habitat and Cultural Sites: 19% of oil located within area
-  Oil

Map Scale: 1:50,000 Inset Map Scale: 1:15,000
Projection: UTM, NAD 83, Zone 10
0 1 2 4 Kilometers



This map is a living document and is intended to be amended and refined over time. It is not an expression of the location of Tsleil-Waututh aboriginal title. The data used to produce this map originate from many sources and are presented without prejudice. This map is the property of the Tsleil-Waututh Nation and may not be reproduced without written permission.

Sources of spatial data for this map include Tsleil-Waututh Nation, BC Government, Government of Canada, BIEAP, and GeoBase.

Map produced January 2015 by the Tsleil-Waututh Nation.