

**TSLEIL-WAUTUTH NATION**  
**WESTRIDGE MARINE TERMINAL**  
**2005 SPILL ENSEMBLE**  
**LOCATION OF OIL:**  
**24 HOURS AFTER SPILL**

**Legend**

- Oil Location by Area**
- Outer Harbour: 0.03%
  - Port Moody Arm: 0.6%
  - Inner Harbour: 0.7%
  - Indian Arm: 8%
  - Central Harbour: 91%
- Other Indian Reserve**
- IR #3: 4%
- Greenspace**
- Rockfish Conservation Area: 24%
- Tsleil-Waututh Nation Reserve**
- Maplewood Flats: 6%
- Oil**

Map Scale: 1:55,000 Inset Map Scale: 1:15,000  
Projection: UTM, NAD 83, Zone 10  
0 1 2 4 Kilometers

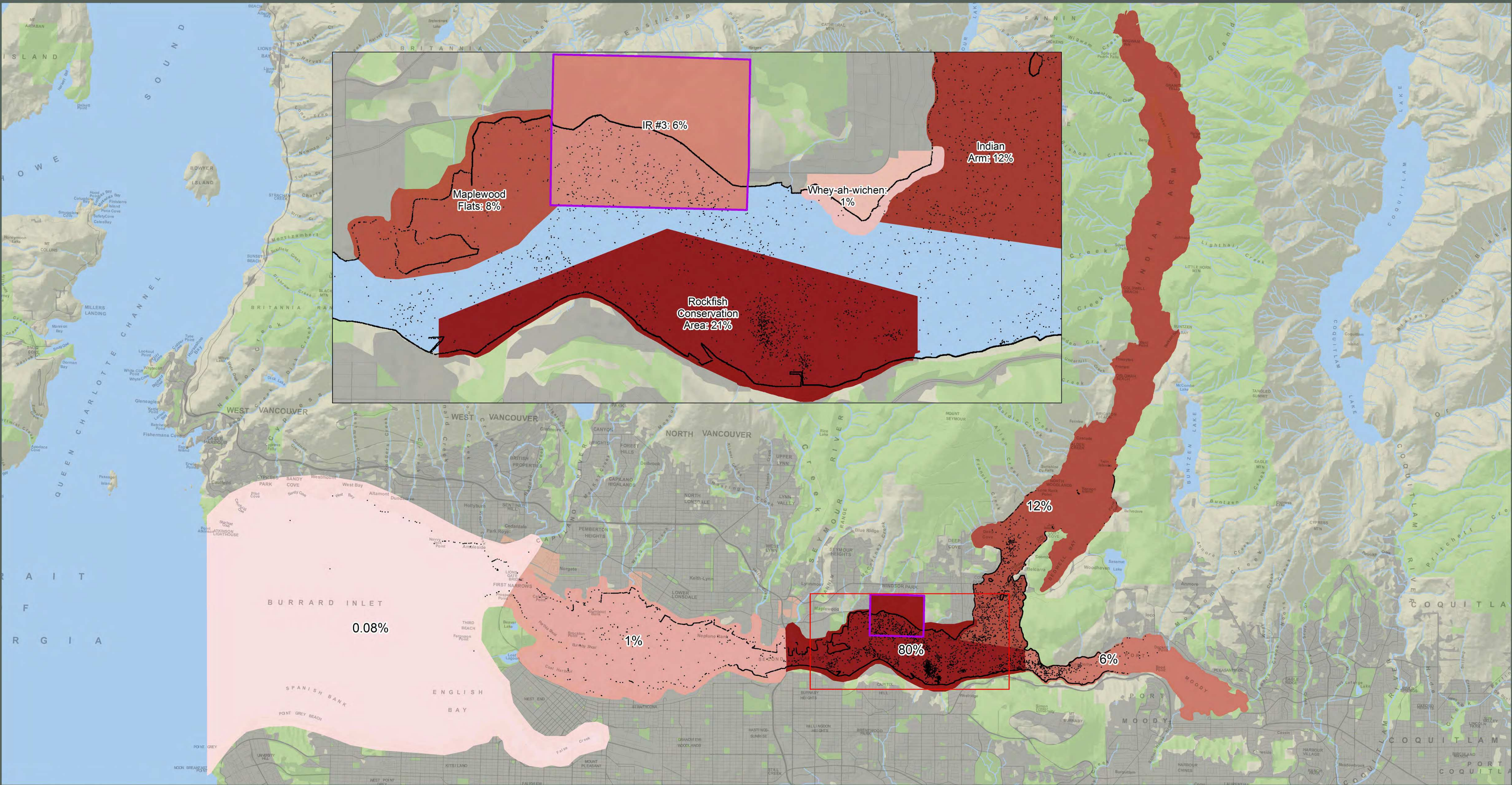


This map is a living document and is intended to be amended and refined over time. It is not an expression of the location of Tsleil-Waututh aboriginal title. The data used to produce this map originate from many sources and are presented without prejudice. This map is the property of the Tsleil-Waututh Nation and may not be reproduced without written permission.

Sources of spatial data for this map include Tsleil-Waututh Nation, BC Government, GeoBase.

Map produced January 2015 by the Tsleil-Waututh Nation.





**TSLEIL-WAUTUTH NATION**  
**WESTRIDGE MARINE TERMINAL**  
**2005 SPILL ENSEMBLE**  
**LOCATION OF OIL:**  
**48 HOURS AFTER SPILL**

**Legend**

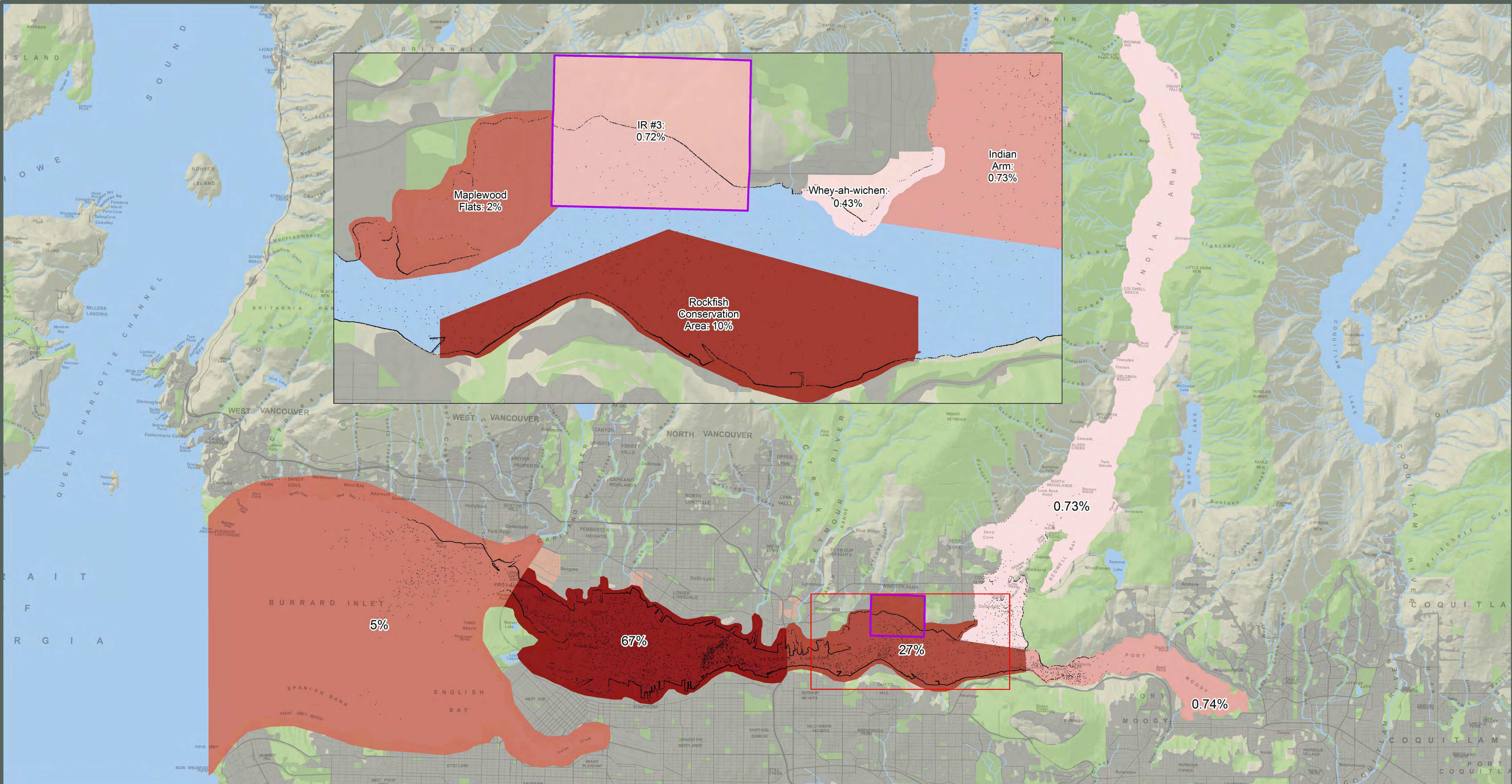
Oil Location by Area		
Outer Harbour: 0.08%		Tsleil-Waututh Nation Reserve
Inner Harbour: 1%		Other Indian Reserve
Port Moody Arm: 6%		Greenspace
Indian Arm: 12%		Oil
Central Harbour: 80%		

Map Scale: 1:55,000 Inset Map Scale: 1:15,000  
Projection: UTM, NAD 83, Zone 10  
0 1 2 4 Kilometers



This map is a living document and is intended to be amended and refined over time. It is not an expression of the location of Tsleil-Waututh aboriginal title. The data used to produce this map originate from many sources and are presented without prejudice. This map is the property of the Tsleil-Waututh Nation and may not be reproduced without written permission.  
Sources of spatial data for this map include Tsleil-Waututh Nation, BC Government, GeoBase.  
Map produced January 2015 by the Tsleil-Waututh Nation.





## TSLEIL-WAUTUTH NATION SECOND NARROWS 2005 SPILL ENSEMBLE

### LOCATION OF OIL: 24 HOURS AFTER SPILL

#### Legend

##### Oil Location by Area

- Indian Arm: 0.73%
- Port Moody: 0.74%
- Outer Harbour: 5%
- Central Harbour: 27%
- Inner Harbour: 67%

- Tsleil-Waututh Nation Reserve
- Other Indian Reserve
- Greenspace
- Oil

Map Scale: 1:55,000 Inset Map Scale: 1:15,000

Projection: UTM, NAD 83, Zone 10

0 1 2 4 Kilometers

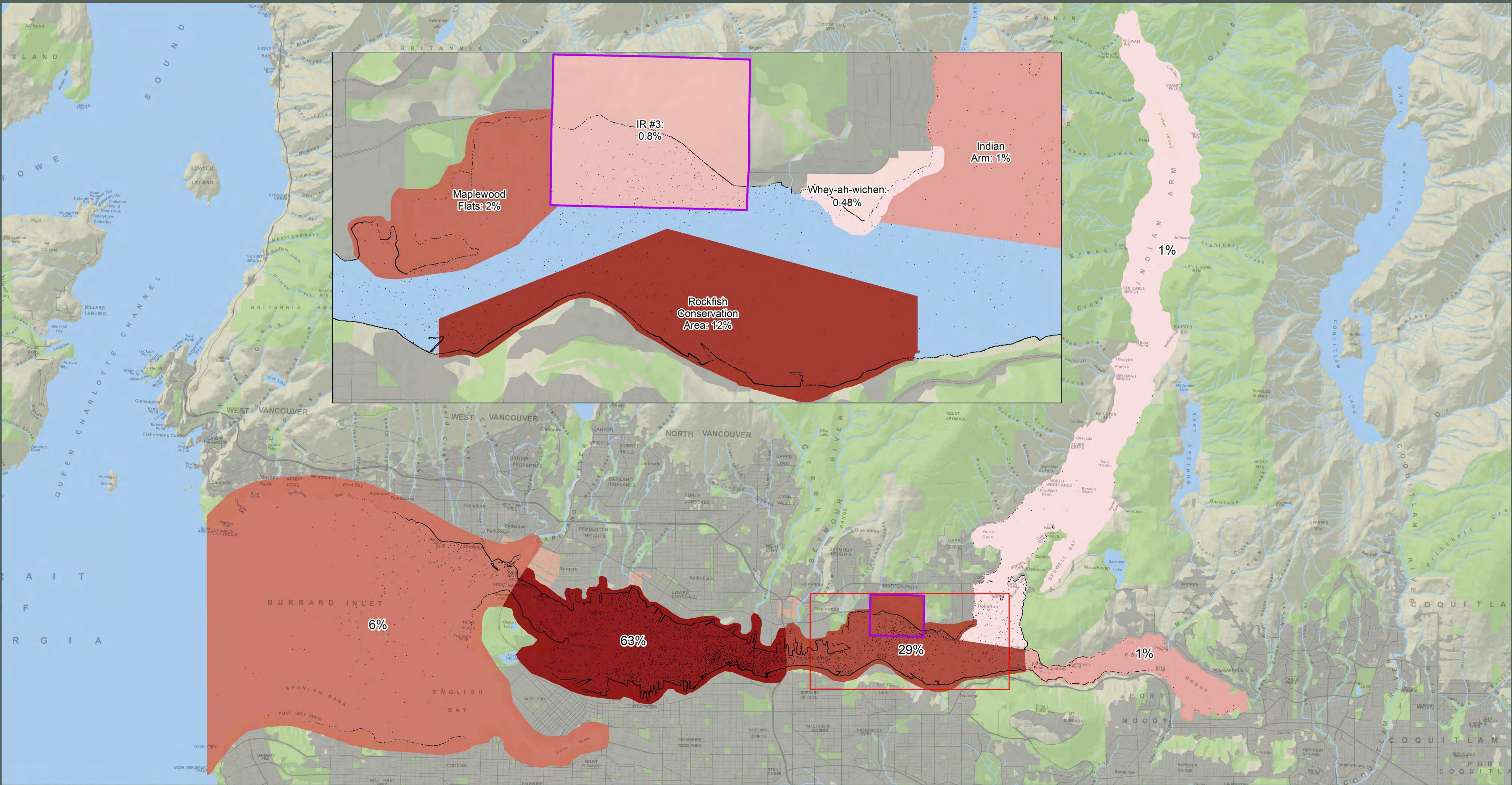


This map is a living document and is intended to be amended and refined over time. It is not an expression of the location of Tsleil-Waututh aboriginal title. The data used to produce this map originate from many sources and are presented without prejudice. This map is the property of the Tsleil-Waututh Nation and may not be reproduced without written permission.

Sources of spatial data for this map include Tsleil-Waututh Nation, BC Government, GeoBase.

Map produced January 2015 by the Tsleil-Waututh Nation.





**TSLEIL-WAUTUTH NATION**  
**SECOND NARROWS**  
**2005 SPILL ENSEMBLE**  
**LOCATION OF OIL:**  
**48 HOURS AFTER SPILL**

**Legend**

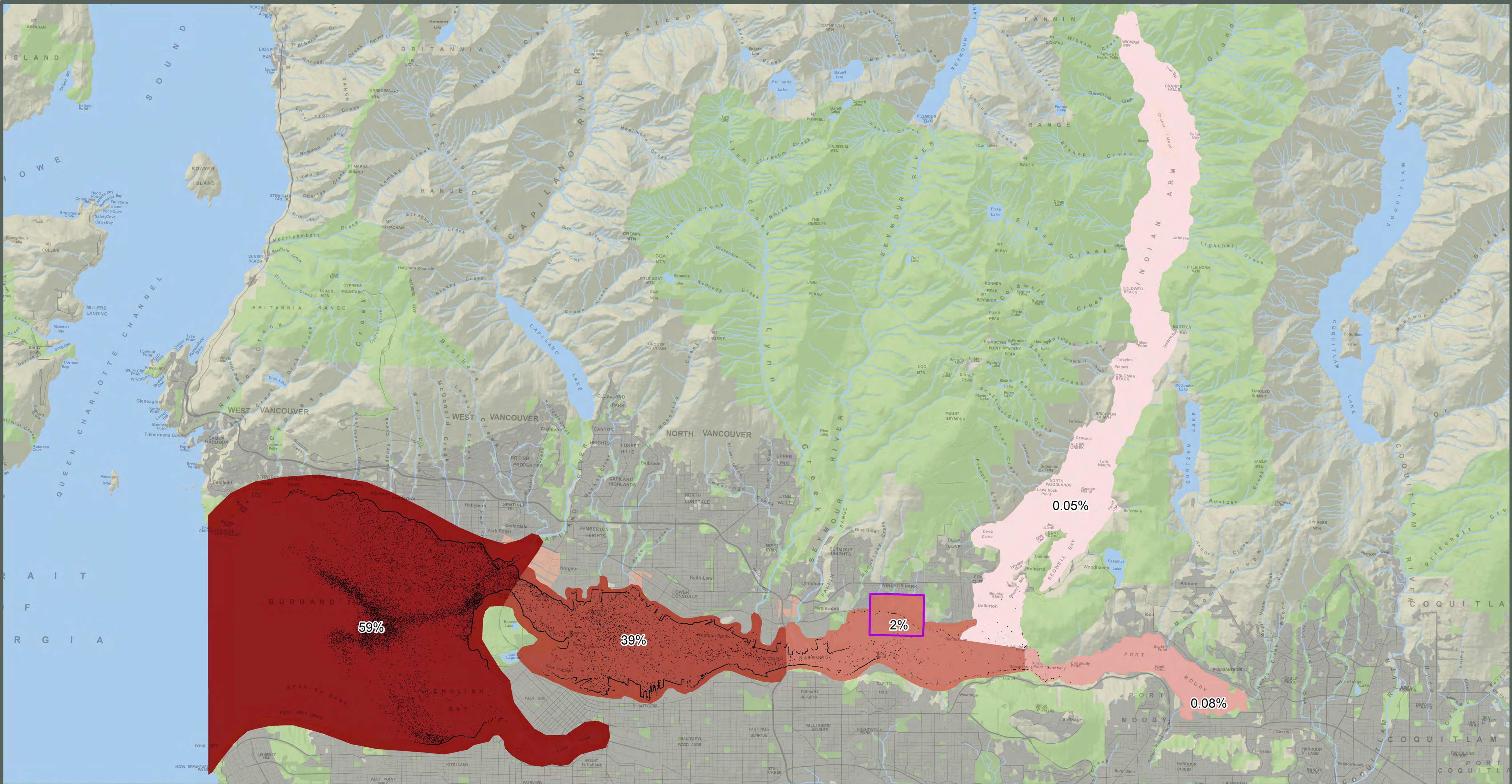
- |                      |                                |
|----------------------|--------------------------------|
| Indian Arm: 1%       | Tsileil-Waututh Nation Reserve |
| Port Moody: 1%       | Other Indian Reserve           |
| Outer Harbour: 6%    | Greenspace                     |
| Central Harbour: 29% | Oil                            |
| Inner Harbour: 63%   |                                |

Map Scale: 1:55,000 Inset Map Scale: 1:15,000  
Projection: UTM, NAD 83, Zone 10  
0 1 2 4 Kilometers



This map is a living document and is intended to be amended and refined over time. It is not an expression of the location of Tsileil-Waututh aboriginal title. The data used to produce this map originate from many sources and are presented without prejudice. This map is the property of the Tsileil-Waututh Nation and may not be reproduced without written permission.  
Sources of spatial data for this map include Tsileil-Waututh Nation, BC Government, GeoBase.  
Map produced January 2015 by the Tsileil-Waututh Nation.





**TSLEIL-WAUTUTH NATION**  
**FIRST NARROWS**  
**2005 SPILL ENSEMBLE**  
**LOCATION OF OIL:**  
**24 HOURS AFTER SPILL**

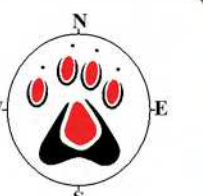
**Legend**

Oil Location by Area		
Indian Arm: 0.05%	Other Indian Reserve	
Port Moody: 0.08%	Greenspace	
Central Harbour: 2%	Oil	
Inner Harbour: 39%		
Outer Harbour: 59%		

Map Scale: 1:55,000

Projection: UTM, NAD 83, Zone 10

0 1 2 4 Kilometers

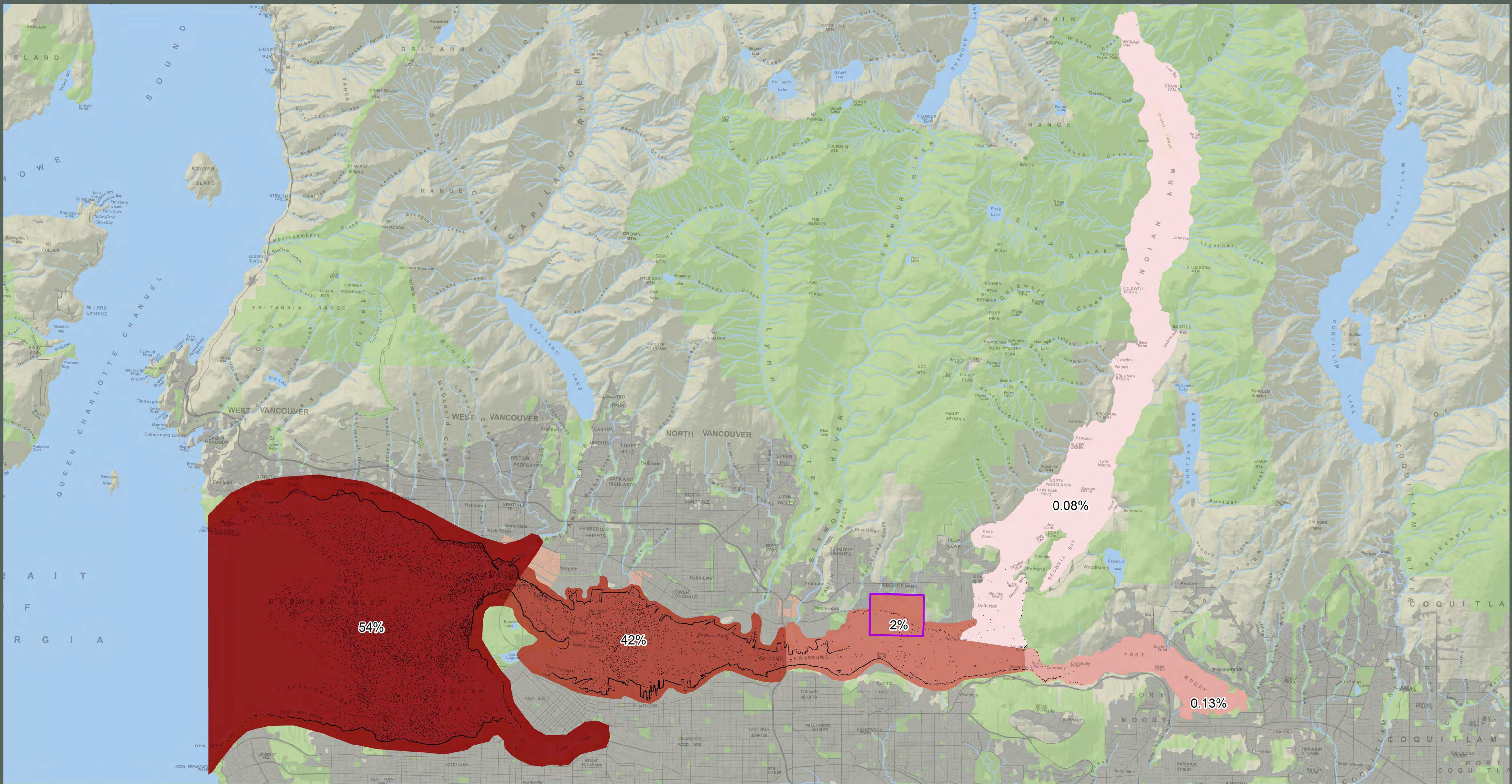


This map is a living document and is intended to be amended and refined over time. It is not an expression of the location of Tsleil-Waututh aboriginal title. The data used to produce this map originate from many sources and are presented without prejudice. This map is the property of the Tsleil-Waututh Nation and may not be reproduced without written permission.

Sources of spatial data for this map include Tsleil-Waututh Nation, BC Government, GeoBase.

Map produced January 2015 by the Tsleil-Waututh Nation.






**TSILEIL-WAUTUTH NATION**  
**FIRST NARROWS**  
**2005 SPILL ENSEMBLE**  
**LOCATION OF OIL:**  
**48 HOURS AFTER SPILL**

**Legend**

**Oil Location by Area**

- Indian Arm: 0.08%
- Port Moody: 0.13%
- Central Harbour: 2%
- Inner Harbour: 42%
- Outer Harbour: 54%

 Tsileil-Waututh Nation Reserve

 Other Indian Reserve

 Greenspace

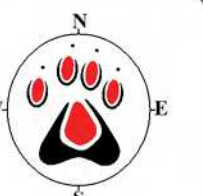
 Oil

Note: 0.7% chance of oil leaving Burrard Inlet

Map Scale: 1:55,000

Projection: UTM, NAD 83, Zone 10

0 1 2 4 Kilometers



This map is a living document and is intended to be amended and refined over time. It is not an expression of the location of Tsileil-Waututh aboriginal title. The data used to produce this map originate from many sources and are presented without prejudice. This map is the property of the Tsileil-Waututh Nation and may not be reproduced without written permission.

Sources of spatial data for this map include Tsileil-Waututh Nation, BC Government, GeoBase.

Map produced January 2015 by the Tsileil-Waututh Nation.